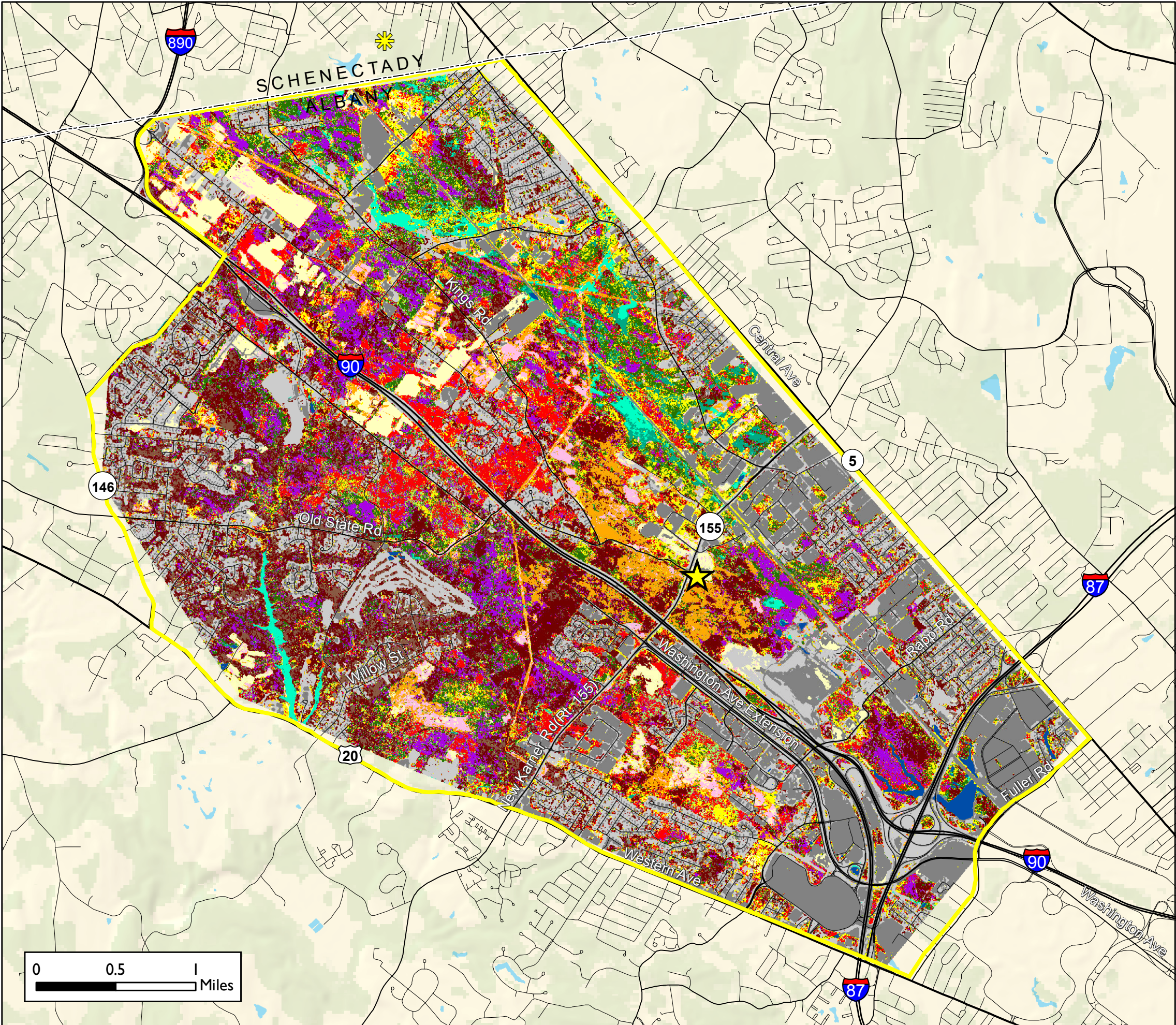


Management Plan For The Albany Pine Bush Preserve



Woodlawn Preserve

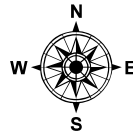
- Discovery Center
- Study Area

Study Area
 13,000 acres

- Land Cover Types**
- Impervious Surface
 - Mowed Lawn
 - Exposed Soil
 - Grasslands/Herbaceous Open
 - Scrub Oak Barrens/Scrub Oak Thicket/Deciduous Regen
 - Aspen
 - Locust
 - Oak
 - Red Maple
 - Mixed Deciduous/Black Cherry
 - White Pine
 - Pitch Pine
 - Shrubby/Herbaceous Wetland
 - Forested Wetland/Red Maple Swamp
 - Water

Sources:
 Land Cover - 2014, Seleen based on QuickBird imagery.
 Roads - 2009, NY CSCIC

Prepared By:



March 2017

**Figure 3:
 Ecological Communities**

Prepared by: Tyler Briggs, Fire Management and GIS Specialist

